



Standard sprockets

Standard sprockets can be supplied ex stock with custom bore or bored and grooved "ready-to-install" at extra cost.

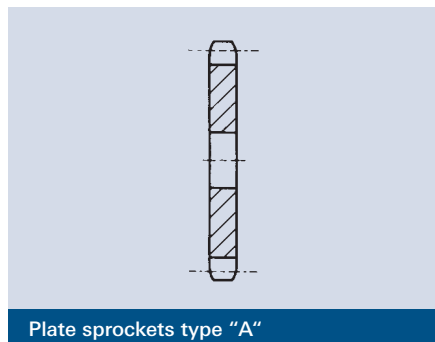
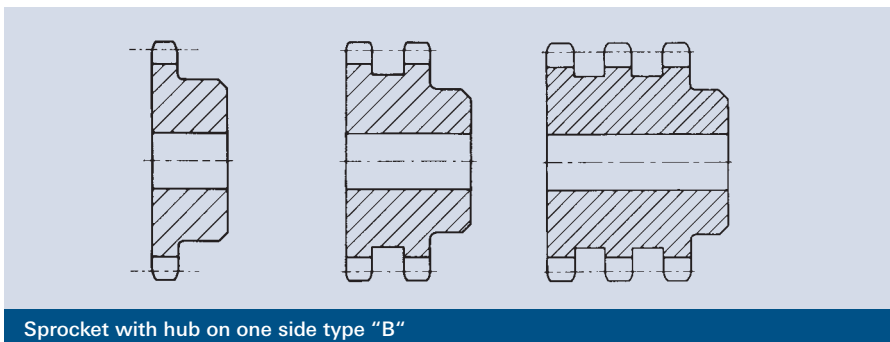


Plate sprockets type "A"

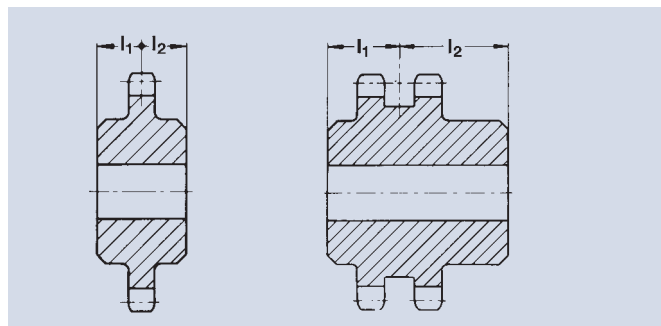


Sprocket with hub on one side type "B"

Sprockets made to specifications

Sprockets can be manufactured to your specifications and drawings.

Sprockets with hub on both sides (type "C") can be symmetrical or asymmetrical. For asymmetrical hub lengths the two hub sections l_1 and l_2 up to the centre of the sprocket must be stated in your order.

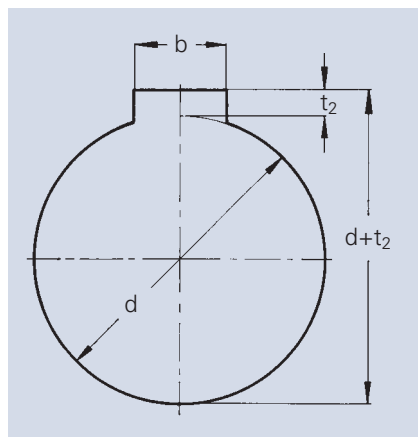


Material grades

For sprockets with a diameter of up to approx. 300 mm unalloyed steel with a steel strength of 500 - 600 N/mm² (S355JOC, C45 and the like) are usually sufficient. For larger sprockets cast iron suffices in case of normal loads. For drive pinions subjected to high loads with speeds

of more than 500 rpm or with chain speeds of more than 1m/s it is recommended to harden or to harden and temper the teeth to 50 ± 2 HRC.

GROOVE SIZES



Groove sizes for woodruff keys DIN 6888 are in accordance with: DIN 6885 sheet 1 (with clearance) design A, DIN 6885 sheet 2 design B

We manufacture hub grooves only when specifically ordered by our customers. If no further specifications are given, we will work according to DIN 6885 sheet 1.

DIN	for shaft diameter	Groove width b	Feather keys				Keyways		Hollow keys	Flat keys	
			6885 Sheet 1		6885 Sheet 2		6885 Sheet 3	6886	6887	6881/6889	6883/6884
			with clearance	with oversize	with clearance	with oversize	with clearance	with oversize			
more than 6	to 8	2,0	1,0	0,5	-	-	-	0,5	-	-	-
" 8	" 10	3,0	1,4	0,9	-	-	-	0,9	-	-	-
" 10	" 12	4,0	1,8	1,2	1,1	-	-	1,2	1,2	-	-
" 12	" 17	5,0	2,3	1,7	1,3	1,2	0,8	1,7	1,7	-	-
" 17	" 22	6,0	2,8	2,2	1,7	1,6	1,1	2,2	2,2	-	-
" 22	" 30	8,0	3,3	2,4	1,7	2,0	1,4	2,4	2,4	3,2	3,2
" 30	" 38	10,0	3,3	2,4	2,1	2,4	1,8	2,4	2,4	3,7	3,7
" 38	" 44	12,0	3,3	2,4	2,1	2,2	1,6	2,4	2,4	3,7	3,7
" 44	" 50	14,0	3,8	2,9	2,6	2,1	1,4	2,9	2,9	4,0	4,0
" 50	" 58	16,0	4,3	3,4	2,6	2,4	1,7	3,4	3,4	4,5	4,5
" 58	" 65	18,0	4,4	3,4	3,1	2,3	1,6	3,4	3,4	4,5	4,5
" 65	" 75	20,0	4,9	3,9	4,1	2,7	2,0	3,9	3,9	5,5	5,5
" 75	" 85	22,0	5,4	4,4	4,1	3,1	2,4	4,4	4,4	6,5	6,5
" 85	" 95	25,0	5,4	4,4	4,1	2,9	2,2	4,4	4,4	6,4	6,4
" 95	" 110	28,0	6,4	5,4	5,1	3,2	2,4	5,4	5,4	6,9	6,9
" 110	" 130	32,0	7,4	6,4	5,2	3,5	2,7	6,4	6,4	7,9	7,9
" 130	" 150	36,0	8,4	7,1	6,5	3,8	3,0	7,1	7,1	8,4	8,4
" 150	" 170	40,0	9,4	8,1	8,2	-	-	8,1	8,1	-	9,1
" 170	" 200	45,0	10,4	9,1	-	-	-	9,1	9,1	-	10,4
" 200	" 230	50,0	11,4	10,1	-	-	-	10,1	10,1	-	11,7
" 230	" 260	56,0	12,4	11,1	-	-	-	11,1	11,1	-	-

