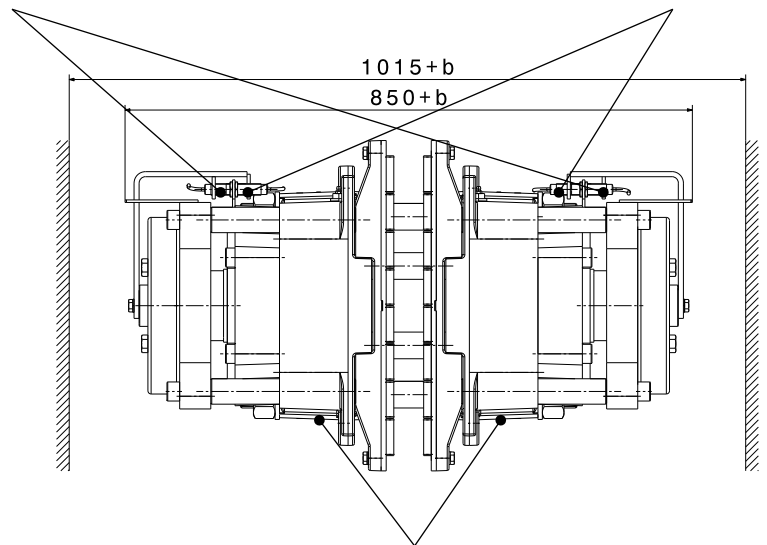
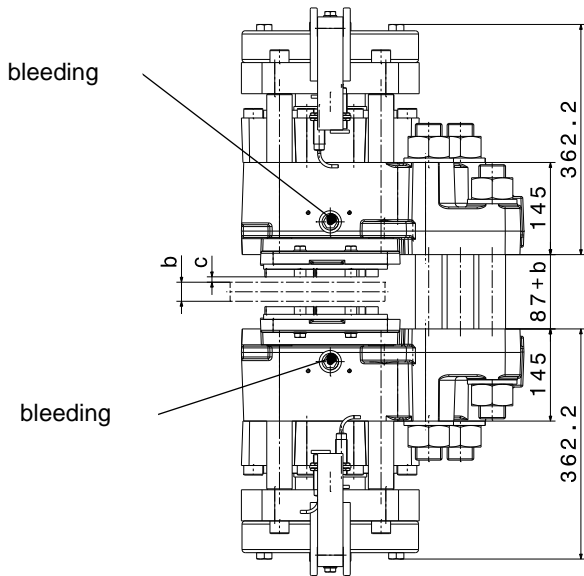


optional limit switch: brake open / closed

optional limit switch: lining wear



hydraulic connection G 1/2"



Mounting Studs		
n	quantity	6
	size, grade	M42, 12.9
M <sub>A</sub>	fastening torque	Nm 6000 at μ=0,14
Linings		
	material	sinter
	friction coefficient*	0,4

SHI-Type		251	252
<b>Clamping Force F<sub>A</sub></b>			
F <sub>A</sub>	with airgap c = 1 mm	kN 335	440
F <sub>A</sub>	with airgap c = 2 mm	kN 302	400
F <sub>A</sub>	with airgap c = 3 mm	kN 270	360
<b>Torque Calculation</b>			
M <sub>Br</sub>	braking torque	Nm	2 x F <sub>A</sub> x μ x (d/2-100)
<b>Hydraulic</b>			
P <sub>L</sub>	release pressure	bar	105      140
P <sub>max</sub>	max. pressure	bar	150      175
V <sub>max</sub>	volumen at c= 2,0 mm	ltr	0,142
<b>Brake Discs</b>			
b	disc thickness	mm	≥ 20
d	disc-Ø	mm	≥ 1200
d <sub>1</sub>	max. hub or drum-Ø	mm	d-490mm
<b>Dimensions</b>			
L x W x H = 440 x (850+b) x 520 mm			
weight: 610 kg			

\*average friction coefficient with standard material combination and a circumferential speed up to 15 m/s