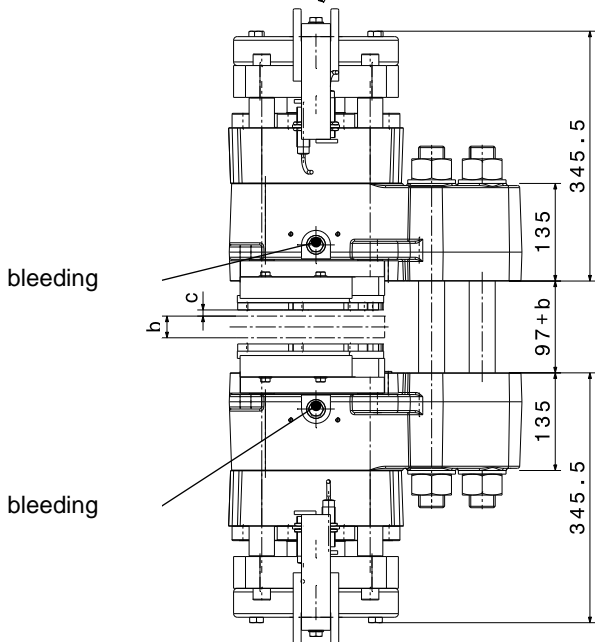
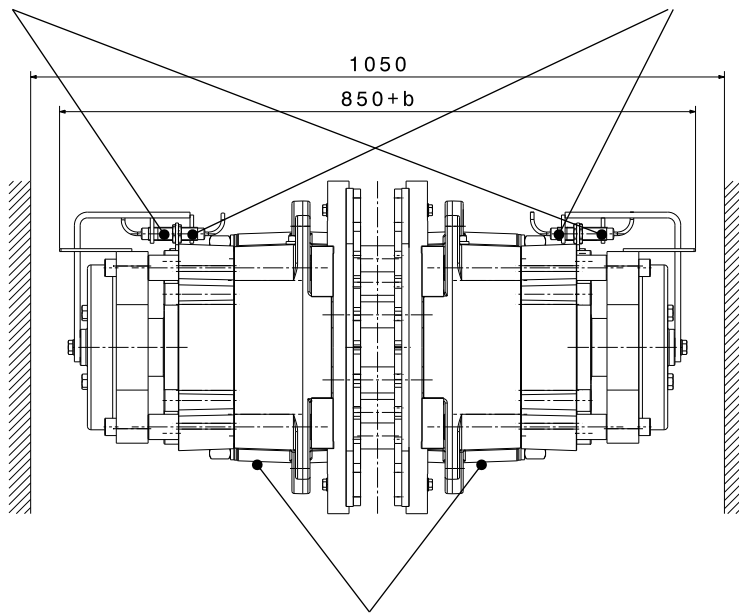
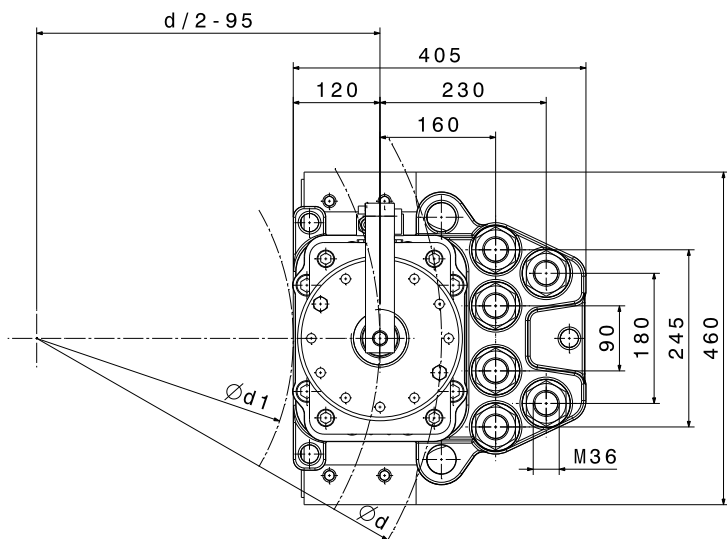


optional limit switch: brake open / closed

optional limit switch: lining wear



SHI-Type		231	232	
<b>Clamping Force <math>F_A</math></b>				
$F_A$	with airgap $c = 2 \text{ mm}$	kN	240	300
$F_A$	with airgap $c = 3 \text{ mm}$	kN	225	270
<b>Torque Calculation</b>				
$M_{Br}$	braking torque	Nm	$2 \times F_A \times \mu \times (d/2-95)$	
<b>Hydraulic</b>				
$P_L$	release pressure	bar	130	170
$P_{max}$	max. pressure	bar	175	205
$V_{max}$	volumen at $c = 2,0 \text{ mm}$	ltr	0,102	
<b>Brake Discs</b>				
$b$	disc thickness	mm	$\geq 20$	
$d$	disc- $\varnothing$	mm	$\geq 1100$	
$d_1$	max. hub or drum- $\varnothing$	mm	$d-440\text{mm}$	
<b>Dimensions</b>				
$L \times B \times H = 405 \times (850+b) \times 460 \text{ mm}$				
weight: 415 kg				

Mounting Studs		
$n$	quantity	6
	size, grade	M36, 12.9
$M_A$	fastening torque	Nm 4000 at $\mu=0,14$
Linings		
	material	sinter
	friction coefficient*	0,4

\*average friction coefficient with standard material combination and a circumferential speed up to 15 m/s