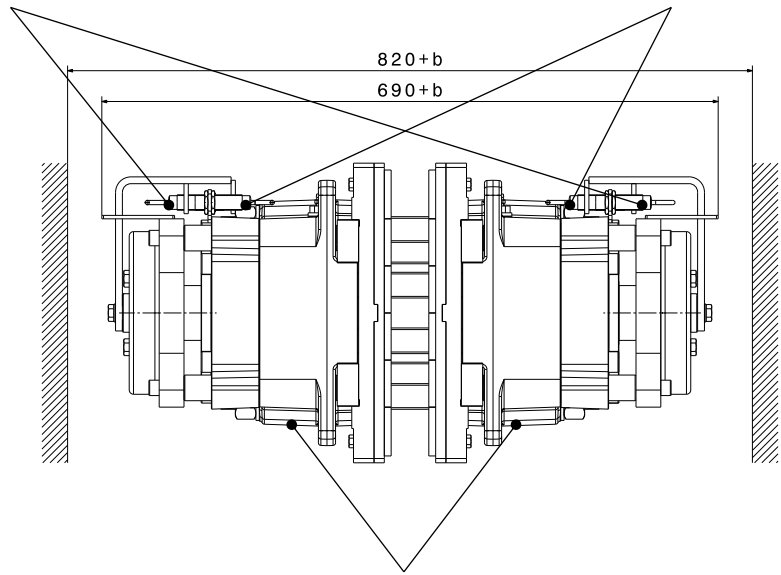
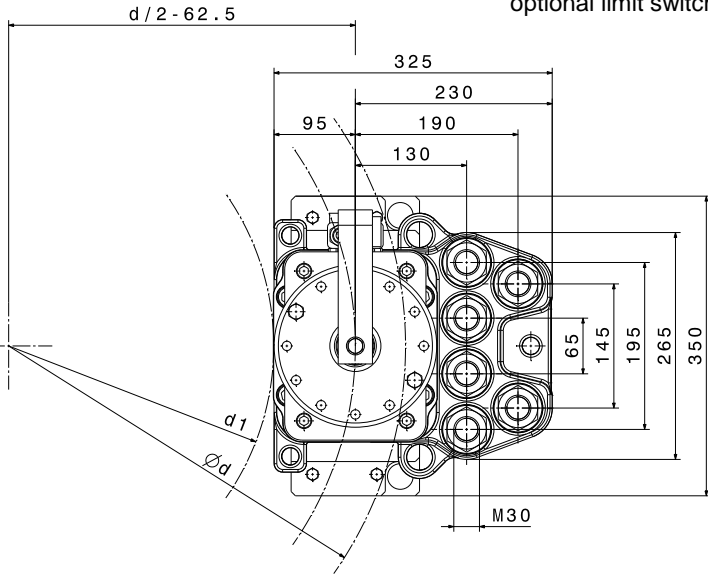
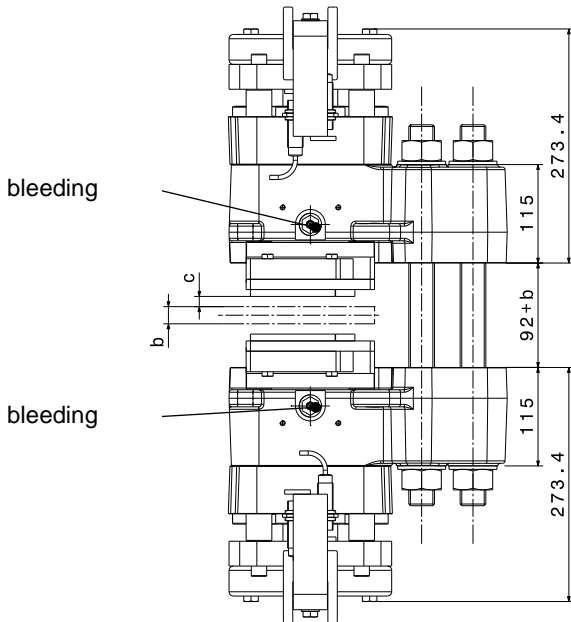


optional limit switch: brake open / closed

optional limit switch: lining wear



hydraulic connection G 1/2"



| SHI-Type | | 161 | 162 | |
|--|---------------------------------|-----|---|-----|
| Clamping Force F_A | | | | |
| F_A | with airgap $c = 1 \text{ mm}$ | kN | 108 | 190 |
| F_A | with airgap $c = 2 \text{ mm}$ | kN | 98 | 160 |
| F_A | with airgap $c = 3 \text{ mm}$ | kN | 88 | 128 |
| Torque Calculation | | | | |
| M_{Br} | braking torque | Nm | $2 \times F_A \times \mu \times (d/2-62,5)$ | |
| Hydraulic | | | | |
| P_L | release pressure | bar | 90 | 170 |
| P_{max} | max. pressure | bar | 150 | 205 |
| V_{max} | volumen at $c = 2,0 \text{ mm}$ | ltr | 0,062 | |
| Brake Discs | | | | |
| b | disc thickness | mm | ≥ 20 | |
| d | disc-Ø | mm | ≥ 900 | |
| d_1 | max. hub or drum-Ø | mm | $d-325\text{mm}$ | |
| Dimensions | | | | |
| $L \times B \times H = 325 \times (690+b) \times 350 \text{ mm}$ | | | | |
| weight: 230 kg | | | | |

| Mounting Studs | | |
|----------------|-----------------------|-----------------------|
| n | quantity | 6 |
| | size, grade | M30, 12.9 |
| M_A | fastening torque | Nm 2200 at $\mu=0,14$ |
| Linings | | |
| | material | sinter |
| | friction coefficient* | 0,4 |

*average friction coefficient with standard material combination and a circumferential speed up to 15 m/s