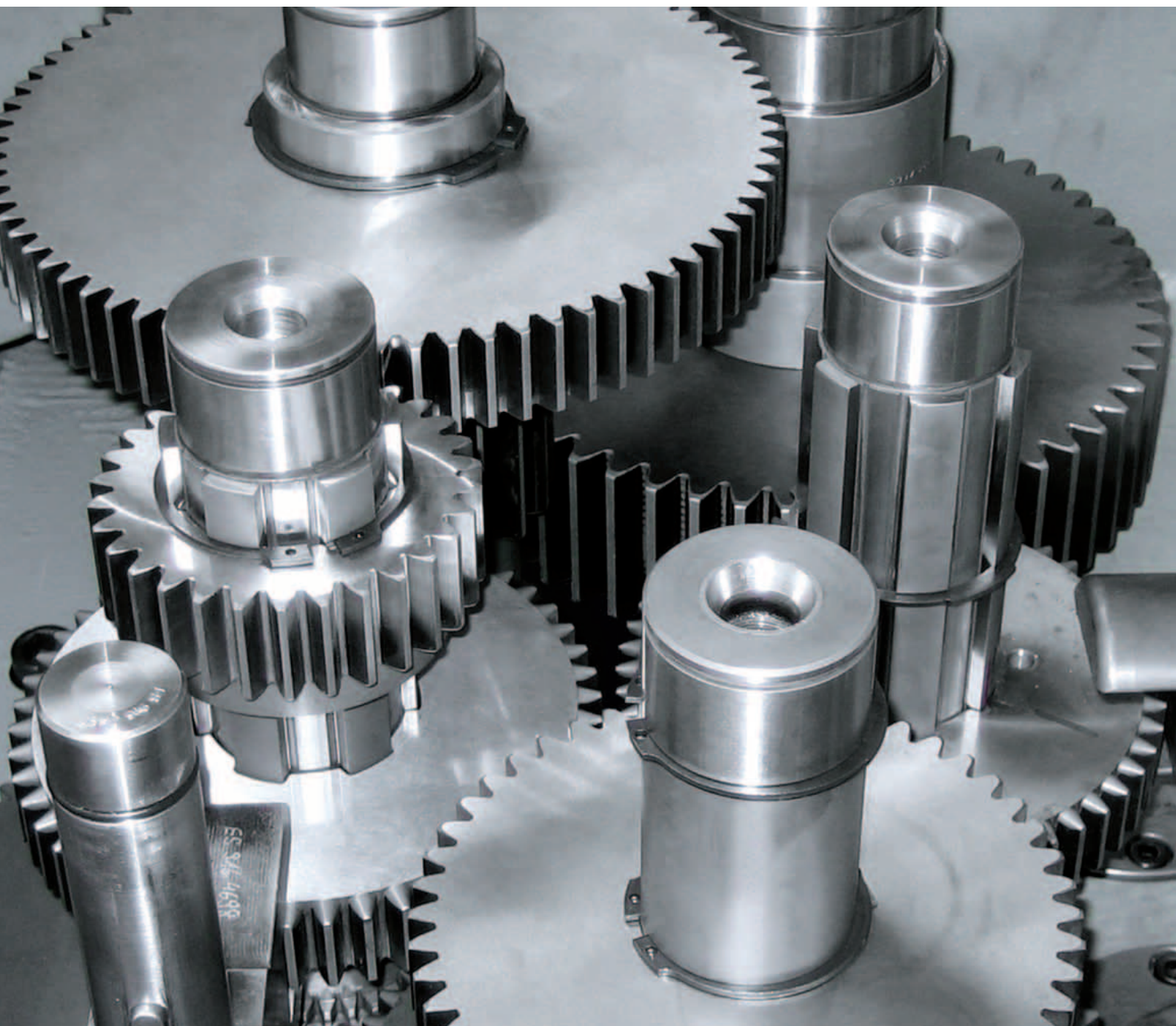


Your specialist for

spindle drives  
planetary gearboxes  
test bench gearboxes  
spur gearboxes  
bevel gearboxes  
helical bevel gearboxes  
extruder gearboxes  
gearboxes for special  
applications  
drive elements

 **RSGetriebe**



certified to  
ISO 9001:2008

**Test bench gearboxes**

Zastoupení pro Českou republiku:



**BMC-TECH**

[www.bmc-tech.cz](http://www.bmc-tech.cz)

[info@bmc-tech.cz](mailto:info@bmc-tech.cz) | +420 545 226 047

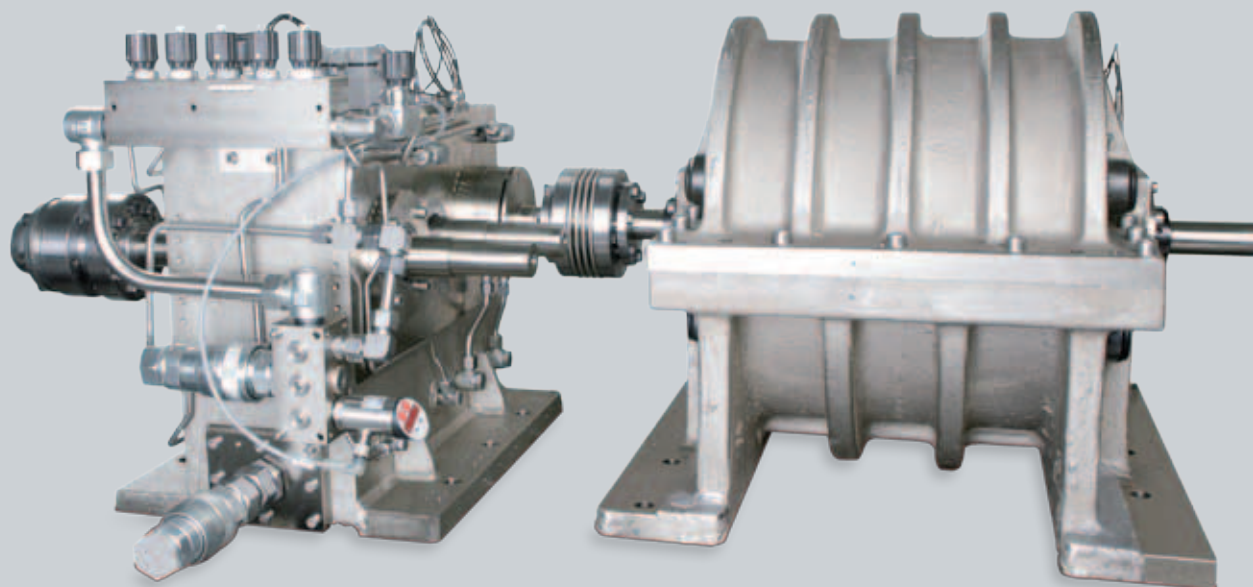
testovací převodovky

Optimal solutions for the automotive industry – robust and individually adaptable solutions made in Sonthofen for gear test benches with performances of up to 7,5 MW.

Precise testing of gears – the components are ideal for the precise testing of gears for hybrid drives with different

configurations. A lubrication unit ensures the continuous supply with conditioned oil. An intuitive-to-use control

monitors the components. All external parts and the housing are nickel-plated.



1

**1** Speed increasing gearbox (left), with variable configurations for input and output

$n_{max}$	16,000 min <sup>-1</sup>
$M_{max}$	350 Nm
$i$	2.2 / 1.8 / 3.96 and their reciprocal value

The high speed shaft is arranged in spindle bearings and has a labyrinth seal. The toothing was optimized in regard to a low noise level.

**1** Gyration mass 1,6 kgm<sup>2</sup> (right)

$n_{max}$	16,000 min <sup>-1</sup>
$M_{max}$	350 Nm

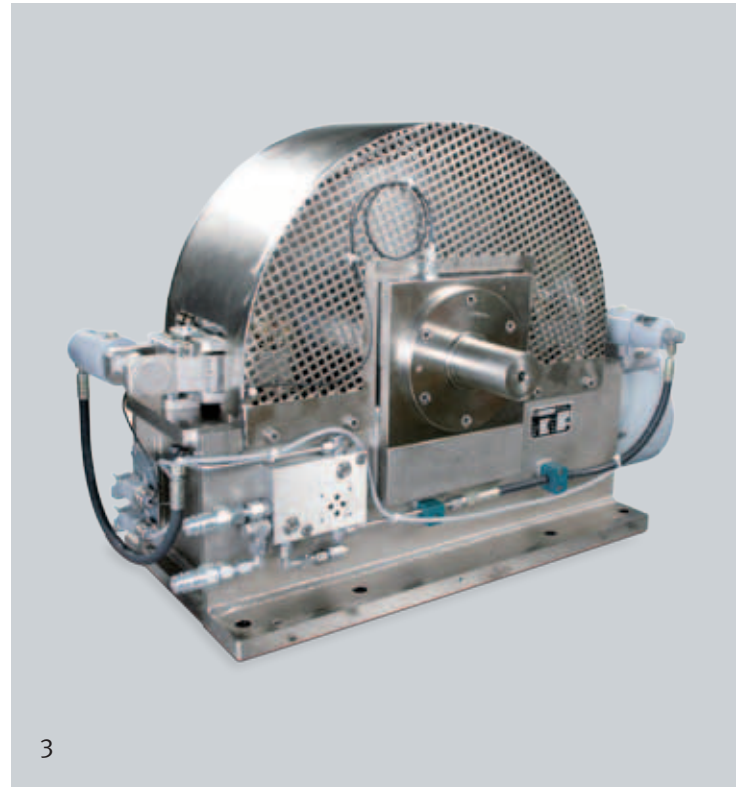
Gyrating mass as raw forging, arranged in spindle bearings

# Test bench gearboxes

Quality and Precision

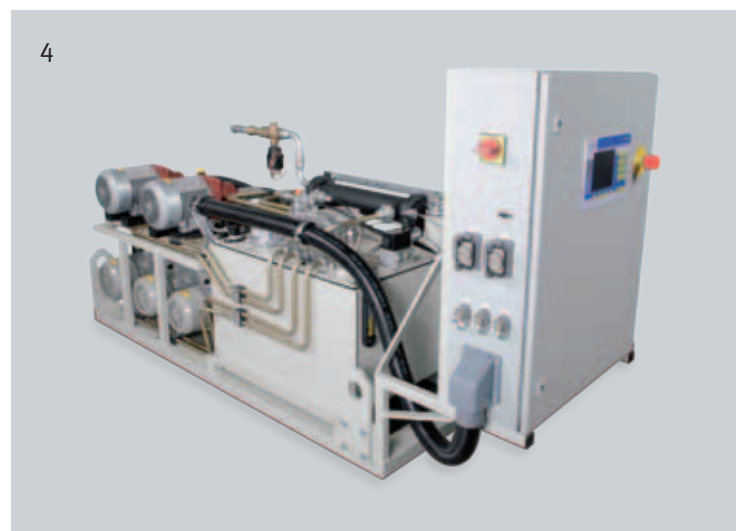
## 3 Hydraulically operated disk brake

$n_{\max}$	2,000 min <sup>-1</sup>
$M_{\max}$	3,500 Nm



## 2 Spur gear unit with variable configurations for input and output

$n_{\max}$	4,500 min <sup>-1</sup>
$M_{\max}$	3,500 Nm
$i$	5.5 / 4.15 / 2.02 and their reciprocal value
Exchange ratio for $i$	4,15 and 2,02



## 4 Aggregate with control

Quality and precision – certified to ISO 9001:2008 und ISO 14001:2004 we are able to guarantee precise high quality special gears and drive elements.

We develop and produce gear solutions for many different industries under state of the art conditions in Sonthofen.

Our customers include manufacturers of machine tools, plastic and rolling machines as well as developers of food and packing machines, test benches and textile machines. But our

high quality drives are also suitable for use in building, printer and paper machinery as well as in the chemical industry.

A high quality, state of the art machine park and absolute care in assembly coupled with the latest quality assurance techniques form the best basis for your and our success.

**RSGetriebe GmbH**  
Oberstdorfer Straße 24  
D - 87527 Sonthofen

Phone +49 (0) 8321 60771 - 0  
Fax. +49 (0) 8321 60771 - 99

info@rsgetriebe.de

rsgetriebe.de